



Service Bulletin

SB 80-13

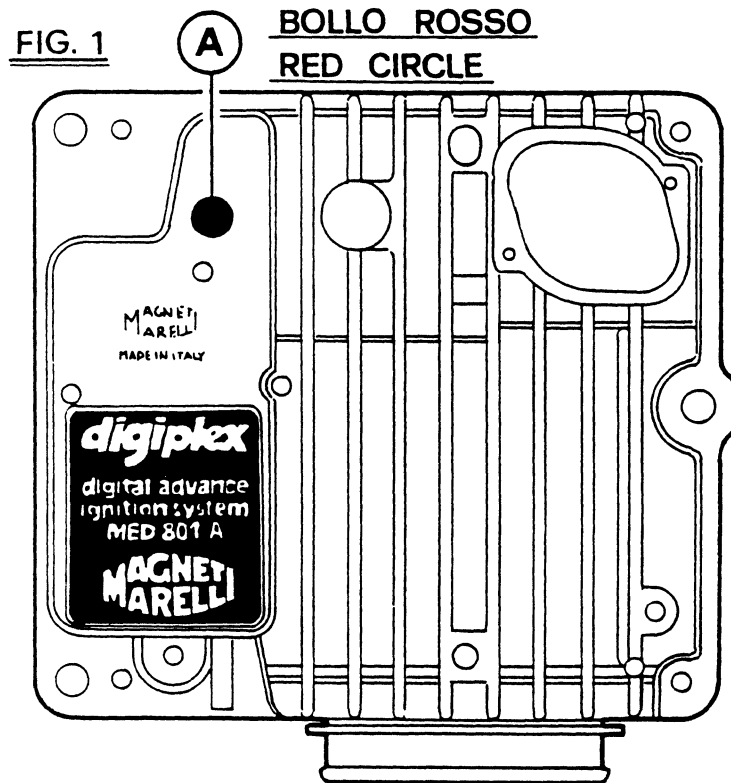
8-5-82

SUBJECT: Magneti, Marelli Digiplex Ignition Modules
VEHICLES: All 308 Fuel Injected Models (Up to C.N. 41753)

SERVICE INFORMATION:

Magneti Marelli has added a slight modification to the Digiplex electronic ignition modules (part no. 115747), in order to avoid the possibility of occasional E.M.I. (electronic magnetic interferences). The updated Digiplexes keep the same part no. 115747, are identified by a red painted circle (A), Fig. 1, and have been introduced into production starting with chassis no. 41753.

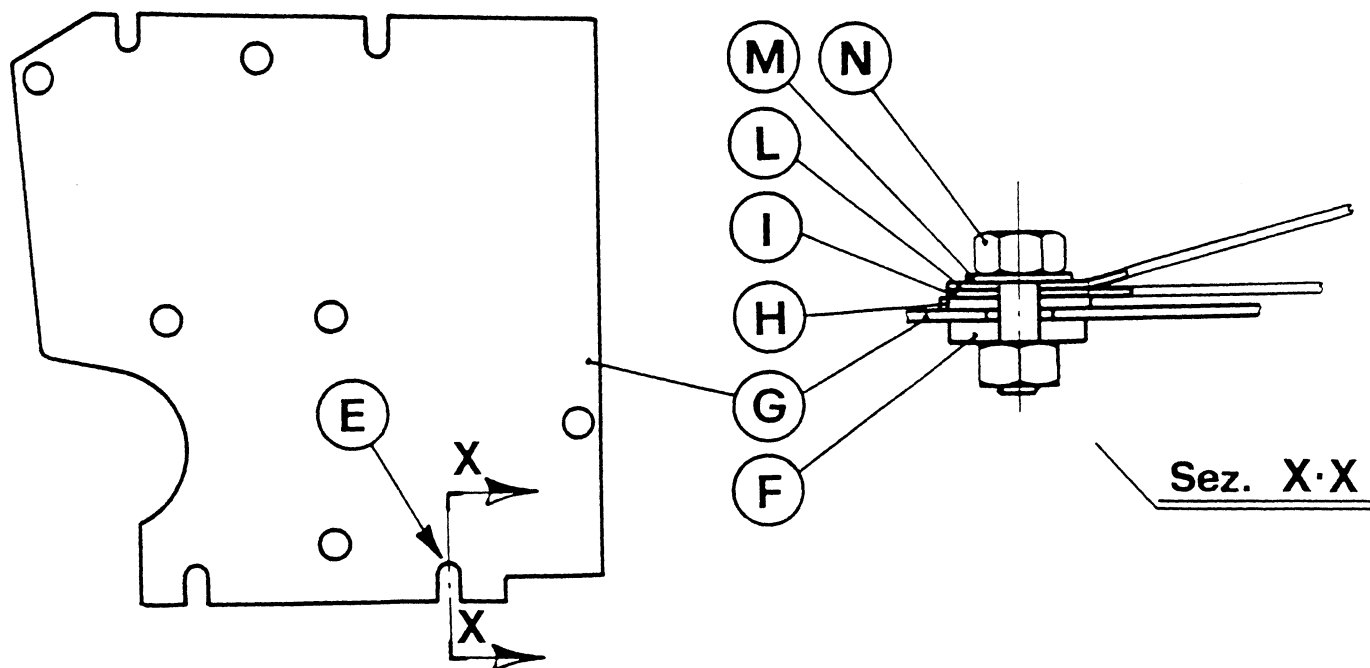
It is advisable to extend the same modification to all 308 GTBi/GTSi and Mondial 8 with chassis numbers lower than 41753 when circumstances allow it.



NOTE:

Whenever a new Digiplex is fitted to the car, you should always make sure the connections for the ground are correct by performing the following:

- Mondial 8 With a ohmmeter, check for 0Ω resistance between the Digiplex casings and any grounded element of either body or engine.
- 308 GTBi/GTSi Once fitted into the car, the Digiplexes are no longer accessible. In this case you should make sure that the ground cable terminals (I) and (L), Figures 2 and 3 are in the proper location and properly fitted, with a ohmmeter check that they are grounded



The ground terminals must be connected to the bolt of position (E), shown in Figure No. 2.

The correct sequence to fasten terminals (I) and (L) is shown by Figure No. 3 where, starting from the bottom, you can see the following pieces:

F — Threaded bracket, rigid with the body, corresponding to position (E), Fig. 2.

G — Detachable plate holding both Digiplex units (P.N. 115597).

H — Flat washer.

I-L — Ground cable terminals.

M — Spring washer.

N — Head of fastening bolt.

IMPORTANT: DO NOT CONNECT ANY ACCESSORIES (For Example: Alarm Systems, C.B. Radios & Telephones) NEITHER TO THE DIGIPLEX IGNITION MODULES NOR TO ANY COMPONENT OF THE IGNITION SYSTEM, SINCE THIS MIGHT STRONGLY INTERFERE WITH THE PROPER OPERATION OF THE IGNITION AND DAMAGE MAY RESULT.

RECOMMENDED: After replacing the Digiplexes with the updated ones, please ensure you paint a red dot on the upper face of the throttle shaft (In the engine compartment, near the intake manifold) in order to visually indicate that the updating has been made.