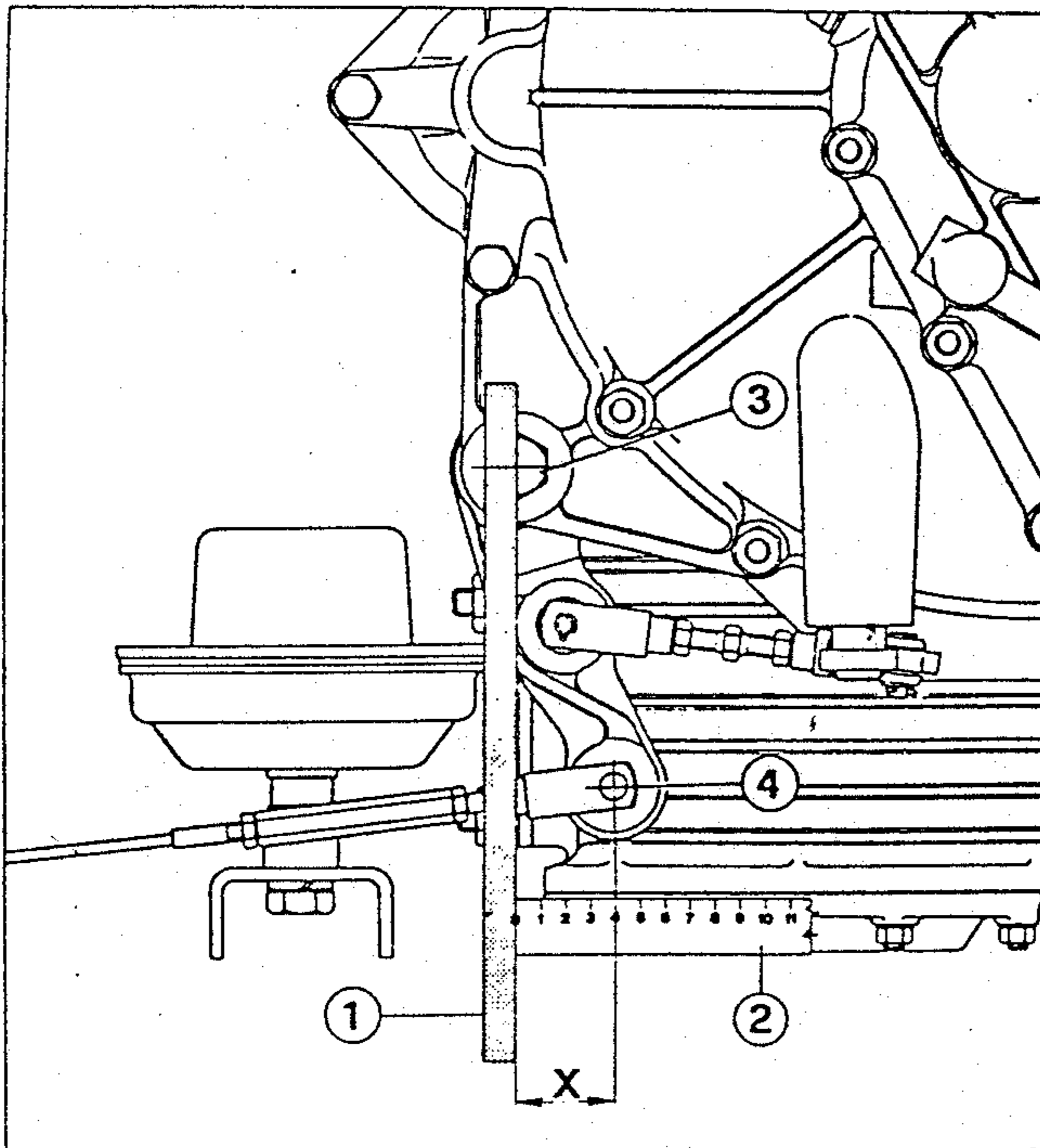


DATE: 8/10/87

SUBJECT: CLUTCH RELEASE SYSTEM**VEHICLES: TURBO & 328 GTS / GTB**

You are kindly requested to check and adjust the clutch release system on each Turbo and 328 GTB/GTS car with chassis no. lower than 72891 (vehicles in stock included). According to the following procedure:

- 1 - On the clutch housing, measure the distance X (Fig. 1) with a straight edge and a ruler, as shown by Fig. 1. The distance X must read between 40 and 45 mm.

**Fig. 1**

1 - Straight edge, held vertical and positioned on the center of the bolt (3).

2 - Ruler, to which the center of the pin (4) must be referred, in order to read the distance X (X= 40 to 45 mm).

Should the distance X be found outside of the specified range, you shall:



- 2 - Adjust the threaded link C until the specified distance of 40 to 45 mm is achieved.

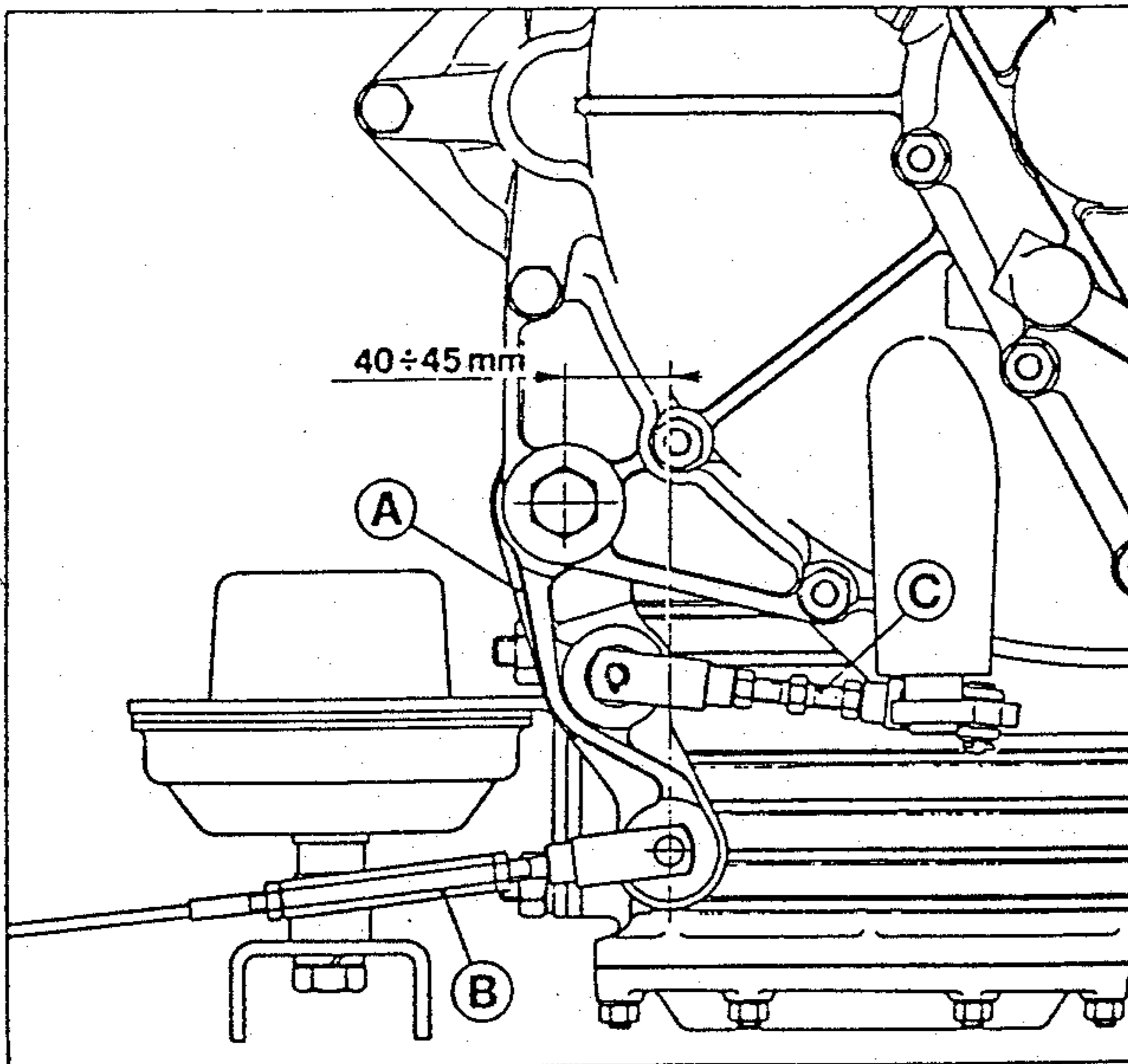


Fig. 2: Clutch Control Linkage on the Clutch Housing.

- A - Intermediate Lever
- B - Threaded connector for compensation of cables stretching.
- C - Threaded link for adjustment of system.

The clutch linkage positioning as shown in Figure 2 allows the release bearing and the related linkage to move backwards as the clutch disc wears normally, without any interference which would cause slipping of the clutch.

Once the distance X is adjusted within 40 to 45 mm, you shall:

- 3 - Check the alignment of the clutch and brake pedals. If necessary, adjust only the threaded connector B (Fig. 2) in order to achieve the alignment.



WARNING: After the above mentioned checkings and adjustments are performed, you shall identify the car with a green painted marking on the threaded connector B.

TIME: The above described operations required 0.4 hours.

COST: To be debited under warranty according to the standard procedure, with the following codes:

	<u>328</u>	<u>Turbo</u>
Component Code:	04.21.53	13.21.53
Problem Code:	01	01
Operation Codes:	04.21.53.0 04.21.73.0	13.21.53.0 13.21.73.0

