

## Service Bulletin

**SB 21-2**  
**3-19-81**



SUBJECT: CLUTCH RELEASE SYSTEM  
 VEHICLES: 308 MODELS  
 SERIAL NO: MODEL FROM SERIAL NO.  
 308 GTB 32829  
 308 GTS 32733  
 308 GTBi/GTSi 32667

**SERVICE INFORMATION:**

To reduce the pedal effort required to disengage the clutch, the clutch release system has been modified. The throw-out bearing is now constantly in contact with the pressure plate spring under a set preload, and the pedal free play is eliminated. The new "self-adjusting" clutch system consists of a new clutch housing (without projection for overcenter spring) control lever and shaft, clutch pedal and release bearing sleeve.

The overcenter spring with related supports and controls, retainer spring on the release bearing sleeve and clutch pedal rest adjuster with locknut have been eliminated (see attached drawings). With the new system, the clutch pedal will move to the rear as the clutch wears. The maximum pedal movement, allowed before pedal realignment, is 15mm (19/32"), above the brake pedal.

The major differences between the "before" and "after" modifications to the system, along with the new adjustment procedure, are specified on the following pages.

**PARTS INFORMATION:**

The part numbers for the new clutch components are as follows;

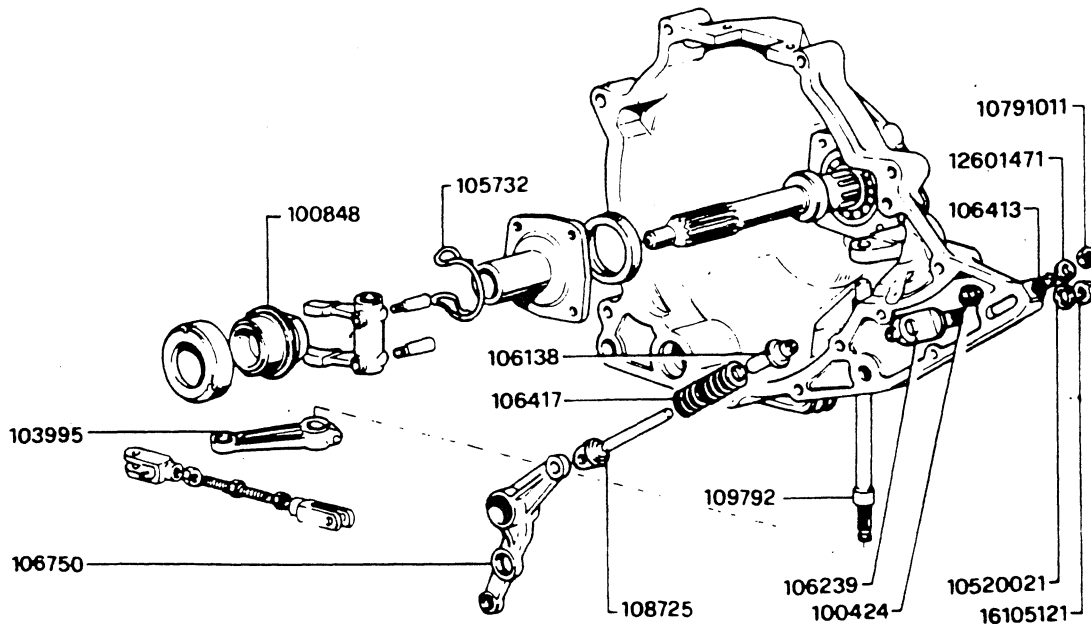
Description	Part No.
Clutch Housing*	116801
Clutch Control Lever	116472
Clutch Control Lever and Shaft Unit	116327
Clutch Pedal	116324
Release Bearing Sleeve	116326

\* The before modification clutch housing, Part No. 109118 can be used if the overcenter spring, Part No. 106417, and its related components, are removed. Please refer to next illustration.

**READ, INITIAL and PASS ON**

SERVICE MANAGER	PARTS MANAGER	SERVICE WRITER	TECHNICAN

BEFORE MODIFICATION

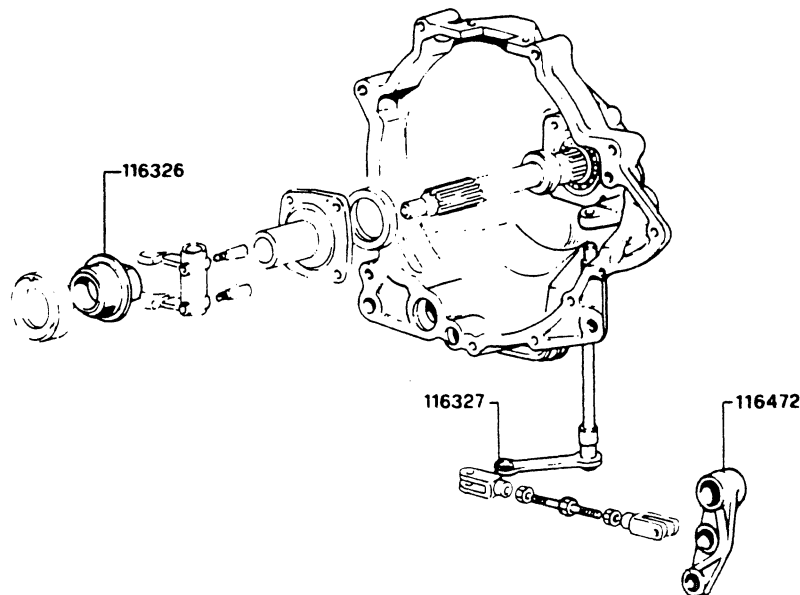


The before modification clutch release control system can be changed to the new "self adjusting" system by:

- Replacing the old clutch pedal with the modified pedal, Part No. 116324, removing the pedal rest adjuster and its locknut, and connecting the return spring.
- Removing all existing components illustrated in above drawing and installing new components, Part No. 116327, 116472, and 116326.

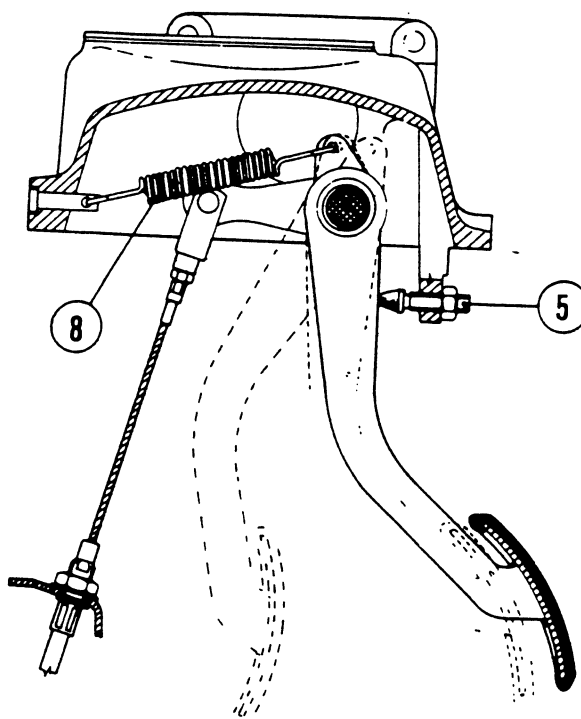
NOTE: All existing before modification components not identified by a part number on above drawing can be used to retrofit system.

AFTER MODIFICATION



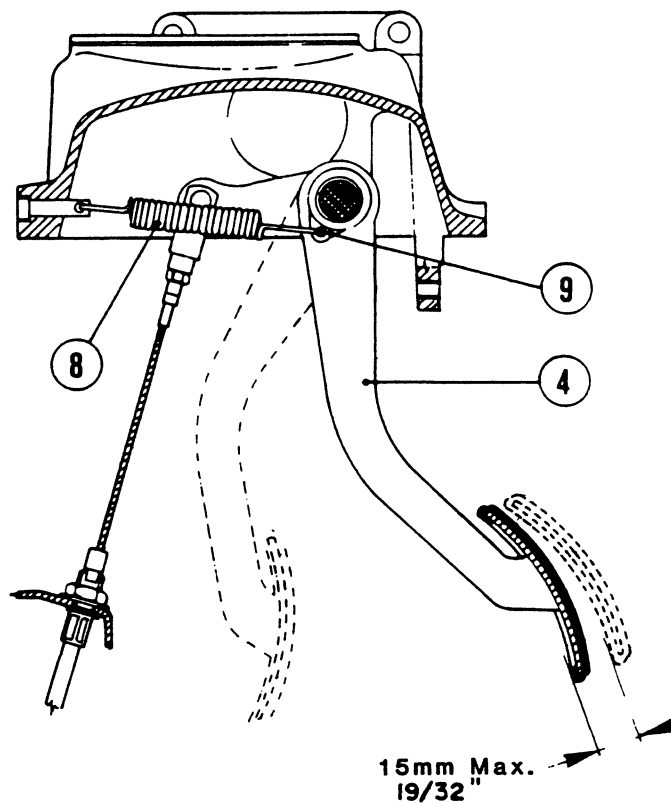
## BEFORE MODIFICATION

- Pedal rest adjuster (5)
- Pedal return spring (8)



## AFTER MODIFICATION

- Pedal return spring (8) is hooked to lower bracket (9).
- Pedal Rest adjuster (5) has been removed.
- Pedal must be aligned as explained on page 4
- When the clutch disc is worn to the point where the clutch pedal is 15mm (19/32") beyond the brake pedal when both pedals are released, the clutch pedal must be realigned as explained on page 4



## ADJUSTMENT PROCEDURE FOR NEW CLUTCH RELEASE CONTROL SYSTEM

NOTE: This procedure must be used whenever a new clutch plate and disc are replaced or an early type system is being changed to the "self adjusting" system.

Proceed as follows:

- Adjust control rod (6) to a length of 105mm (4-1/8")
- Check that center of lower ball joint of lever (2) is 40 to 45mm (1-5/8" to 1-3/4") behind the vertical line passing through bolt (8).  
If necessary adjust control rod (6) to obtain this dimension.
- By adjusting coupling sleeve (7) move clutch pedal in line with the brake pedal.

The new clutch release system should be periodically checked and adjusted every 6500 to 9500 miles or when the clutch pedal is more than 15mm (19/32") above the brake pedal when both pedals are released.

